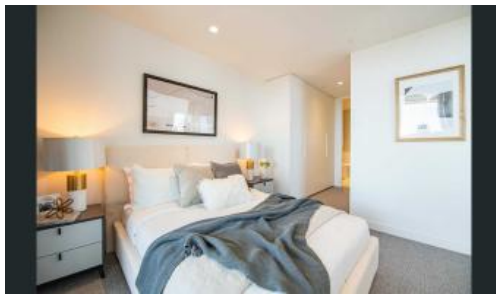




South Melbourne



## Experience Unparalleled Luxury and Serenity near Melbourne's Finest Gardens

Nestled amidst the lush greenery of Melbourne's Royal Botanical Gardens, this extraordinary residence offers a rare opportunity to indulge in unparalleled luxury and tranquility. With panoramic views that encompass the city skyline and the tranquil gardens, every moment spent in this exquisite home is a celebration of life.

### Features:

- Views of Melbourne's cityscape and the Royal Botanical Gardens from every room
- Approximately 112 square meters of spacious, light-filled living areas and bedrooms
- Stunning stone kitchen equipped with top-of-the-line appliances
- Spectacular nighttime vistas across the city and serene garden views
- Access to exclusive amenities, including yoga room, Private dining, BBQ, terrace and concierge service
- Ideal location close to Melbourne's vibrant arts, dining, and entertainment scene

🏠 3 🛏 2 🚿 2

**Price** \$1,520,000 - \$1,540,000

**Property Type** Residential

**Property ID** 2130

**Floor Area** 112 m2

### Agent Details

Carlo Lorusso - 0404 889 663

### Office Details

In2realty

0404 889 663

**IN2REALTY.**

Schedule a viewing today and experience the epitome of luxury living in Melbourne's most prestigious address.

The above information provided has been furnished to us by the vendor/s. We have not verified whether or not that information is accurate and do not have any belief in one way or the other in its accuracy. We do not accept any responsibility to any person for its accuracy and do no more than pass it on. All interested parties should make and rely upon their own inquiries in order to determine whether or not this information is in fact accurate.